

# I visited Tatton Park on:

.....

**I travelled by:**    **I am visiting with:**    **The weather is:**

- |                                  |  |                                  |
|----------------------------------|--|----------------------------------|
| car <input type="checkbox"/>     | family <input type="checkbox"/>        | sunny <input type="checkbox"/>   |
| coach <input type="checkbox"/>   | friends <input type="checkbox"/>       | raining <input type="checkbox"/> |
| bus <input type="checkbox"/>     | school <input type="checkbox"/>        | windy <input type="checkbox"/>   |
| train <input type="checkbox"/>   | Cubs/Brownies <input type="checkbox"/> | snowing <input type="checkbox"/> |
| bicycle <input type="checkbox"/> | other group <input type="checkbox"/>   |                                  |
| foot <input type="checkbox"/>    |  |                                  |

**WE HOPE YOU HAVE ENJOYED  
YOUR VISIT. DO COME AGAIN AND  
SEE WHAT ELSE YOU CAN SPOT!**

If you enjoyed the quiz or have any other comments,  
please let us know! [tatton@cheshireeast.gov.uk](mailto:tatton@cheshireeast.gov.uk)





INSIDE THIS BOOKLET ARE LOTS OF QUIZZES AND FUN THINGS TO LOOK FOR IN THE PARKLAND.

YOU MIGHT NOT BE ABLE TO DO IT ALL IN ONE DAY, SO KEEP THIS BOOKLET FOR YOUR NEXT VISIT.

MOST IMPORTANTLY, **HAVE FUN!**

---

# Scavenger hunt!

Whilst walking in the parkland, see if you can collect the following:

A leaf

A leaf skeleton

Something shiny

Something fuzzy

Something hard

Something green

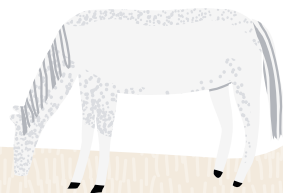
A bone

A twig

A piece of bark (from a dead tree/branch)

Something red or orange

A feather



## Autumn (September - November)

In Autumn the Parkland is full of noises. Can you hear:

- The deer roaring and belching?
- The deer clashing antlers
- The trees shedding their leaves?

### What colour are the leaves today?

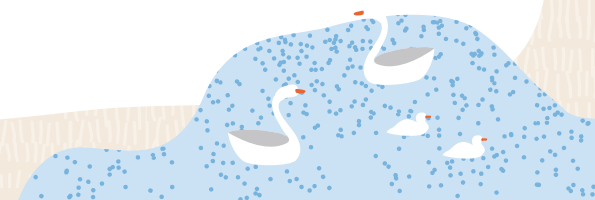
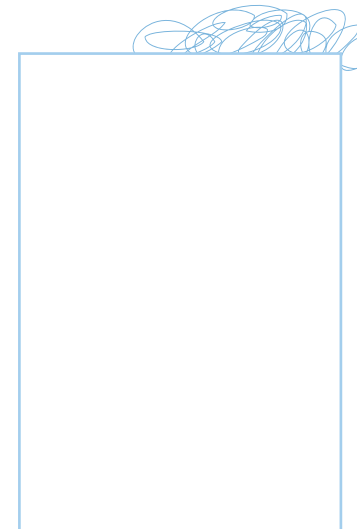
Look carefully, they are not just brown, red and yellow! They could be the colour of rust, blood or wolves' eyes! What do they look like to you?

## Winter (February - February)

In Winter time the trees have lost their leaves and now have a spooky (and beautiful) skeleton shape. Can you draw a skeleton tree here >

In winter the Rangers feed the deer carrots and haylage to help them through the cold months.

See if you can spot them. (Clue: they feed them in the morning by the Old Hall!)



# Tatton through the seasons

## Spring (March - May)

In Spring you can hear lots of birdsong. You may see birds carrying twigs, grass and feathers in their beaks. They will be using these to make nests in which to lay their eggs.

Later in the spring the birds will be feeding their young.

**Can you think of 5 things they may be feeding their babies?**

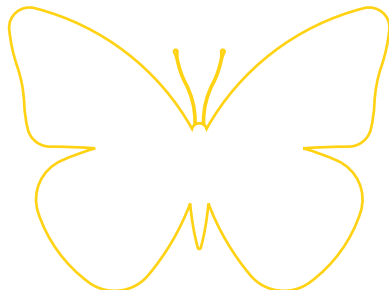
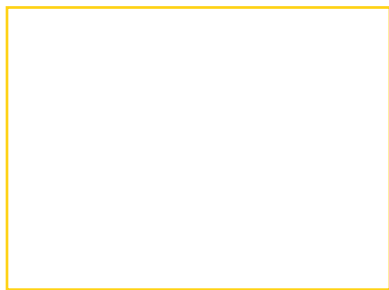
Here are the first two to get you started!: Worms, Caterpillars...

## Summer (June - August)

In the summer you may be lucky enough to see lots of beautiful butterflies in the parkland, like the 'Peacock'.

Please do not pick any flowers so they are left for everyone's enjoyment. You can draw your favourite flower in the box on the left.

Colour in the plain butterfly with the colours you have seen on a butterfly.

















# Food puzzle



What do you think the following animals, birds and insects eat? Match them up by drawing a line between them.

Here's the first, to get you started:

Squirrel		Mouse	
Heron		Fly	
Sheep		Acorn	
Robin		Grass	
Fox		Worm	
Owl		Rabbit	
Spider		Fish	

A black line is drawn from the Squirrel to the Acorn, and another black line is drawn from the Mouse to the Acorn.



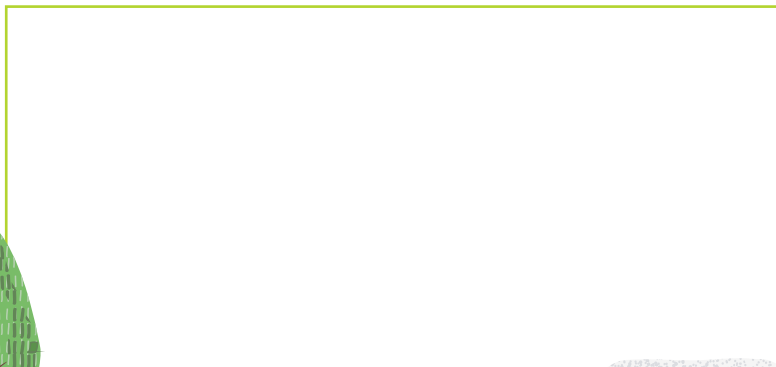
# In the parkland there are lots of trees.

Which is your favourite? .....

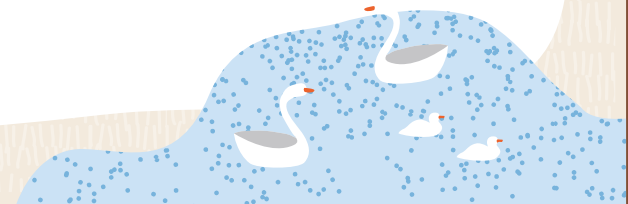
Select from the word list below to describe your favourite tree:

- |           |                |           |
|-----------|----------------|-----------|
| Very Old  | Smooth         | No Leaves |
| Very Tall | Bark           | Twisted   |
| Beautiful | Huge           | Prickly   |
| Short     | Spooky         | Fat       |
| Creaking  | Full of Leaves | Thin      |
| Hollow    | Wrinkled Bark  |           |

Now you can make a bark rubbing of your tree. Place the paper over the bark and gently scribble inside the box with a pencil.



# My Incredible Creature





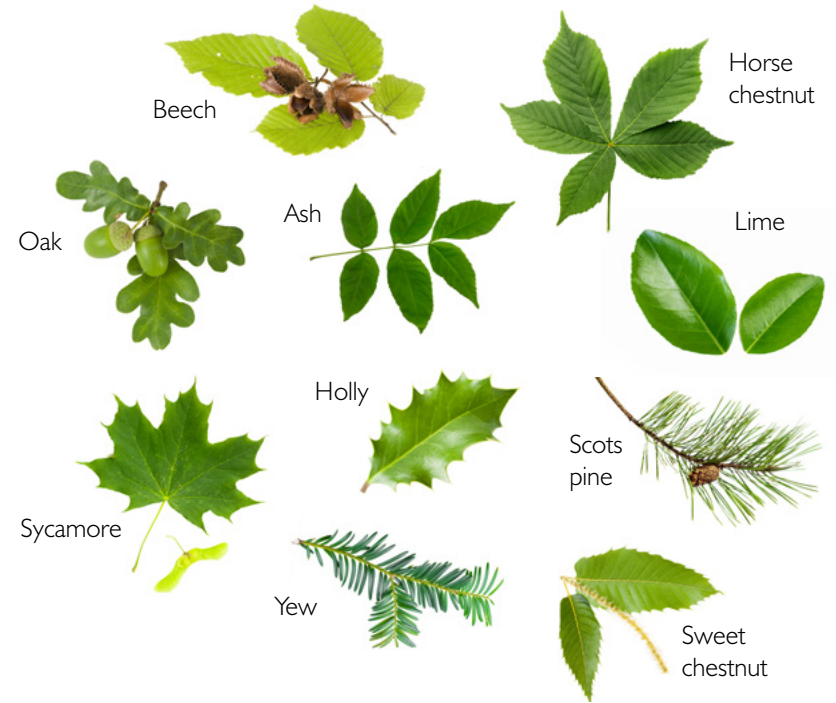
# Design an Incredible Creature

Think about the following and then try and draw a picture of your incredible creature on the other page. You don't need to think of all of them, they are just suggestions!:

- Where does it live?
- How big is it?
- How much does it weigh?
- Does it have legs? If so, how many?
- Does it have scales, fur, feathers or skin?
- How does it move?
- What does it eat?
- If it hunts, how does it catch prey?
- Is it nocturnal (active at night?) or diurnal (active during the day?)
- Is it sociable? Does it hunt in a group or on its own?
- How does it communicate?
- How does it defend itself?
- What is its strongest sense (sight, smell, hearing etc)?



Use these leaf pictures to help identify the trees you see during your visit:



1. Three of these are **evergreens**, can you guess which ones?
2. Which tree has acorns?
3. Which tree has conkers?

Fill in the gap with the word '**lose**' or '**keep**'!

- A. Deciduous trees ..... their leaves in winter
- B. Evergreen trees ..... their leaves in winter

1. Scots Pine, Yew and Holly. 2. An Oak has acorns. 3. The Horse chestnut has conkers  
A. Deciduous trees LOSE their leaves. B. Evergreen trees KEEP their leaves

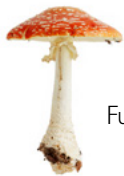


# Eye spy

Tick off any of the following you may have seen while walking in the woods today.



Acorns



Fungi



Squirrel



Ants



Rabbit hole



Pine cones



Stinging nettles



Woodpecker



Worm



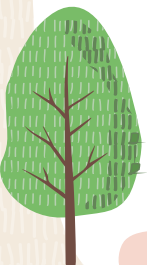
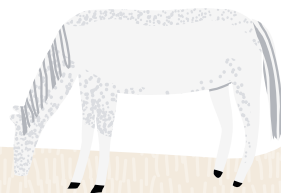
Spider



Pigeon

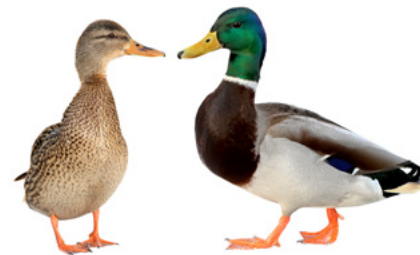


Crow



# Tatton twitcher

As you walk around the meres, look for different birds on or near the water. Tick off the ones you can see:



Mallards



Kingfisher (if you're lucky!)

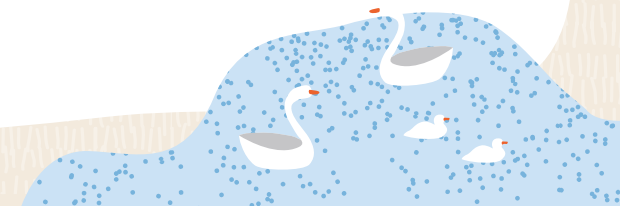


Canada Goose



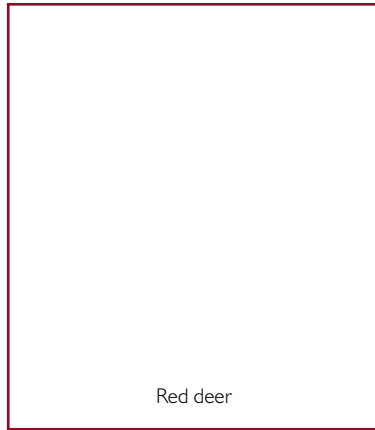
Moorhen

How many did you see? .....

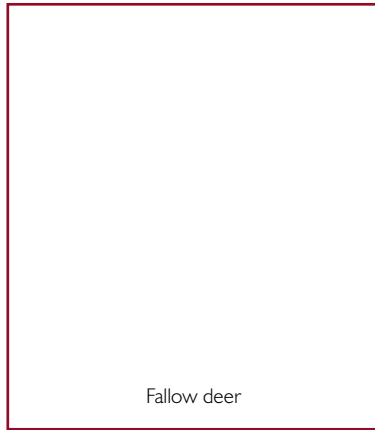


The male deer have antlers on top of their heads, which drop off and re-grow each year.

Draw a picture of the antlers you see. (This will be difficult in spring when the deer have dropped their antlers, so why not draw a picture of the deer instead?).



Red deer



Fallow deer

How many deer do you think live on the Park?  
(Take a guess, the answer is below, no peeking!)

.....

Answer:  
There are  
between 550-650  
deer in the parkland  
during the different seasons.



# Colour chart



What colours can you see around you?  
Tick the colours off on the chart below.





## Smelly search!

Have you seen any animal droppings while walking today?  
See if you can identify them. **Do not touch the poo!**



Rabbit



Goose



Deer

## Tatton tracker

Have you seen any animal tracks like these? You might find them where the ground is muddy, or in the snow.



Fallow deer



Swan



Sheep

If you see any more tracks, why not draw them here:

## Tatton Park has two species of deer, Red and Fallow.

They are wild and can roam free all over the parkland.  
Red deer are red/brown and Fallow deer are lighter with white spots.



Red deer



Fallow deer

- A. The deer are 'browsers', which means they eat grass and leaves on trees. What are they eating now?
- B. What other differences can you see between the deer?  
Write any below.

**RED**

**FALLOW**

.....	.....
.....	.....
.....	.....
.....	.....